

**Project Description**  
**May 2012**  
**Construction of School Office**  
**and classrooms for Class 9 & 10**  
**at Sagar-Bakanje Secondary School**  
**Bakanje VDC, Upper Solu, Nepal**



**For Nykøbing Mors Rotary Klub, Distrikt 1440, Danmark**

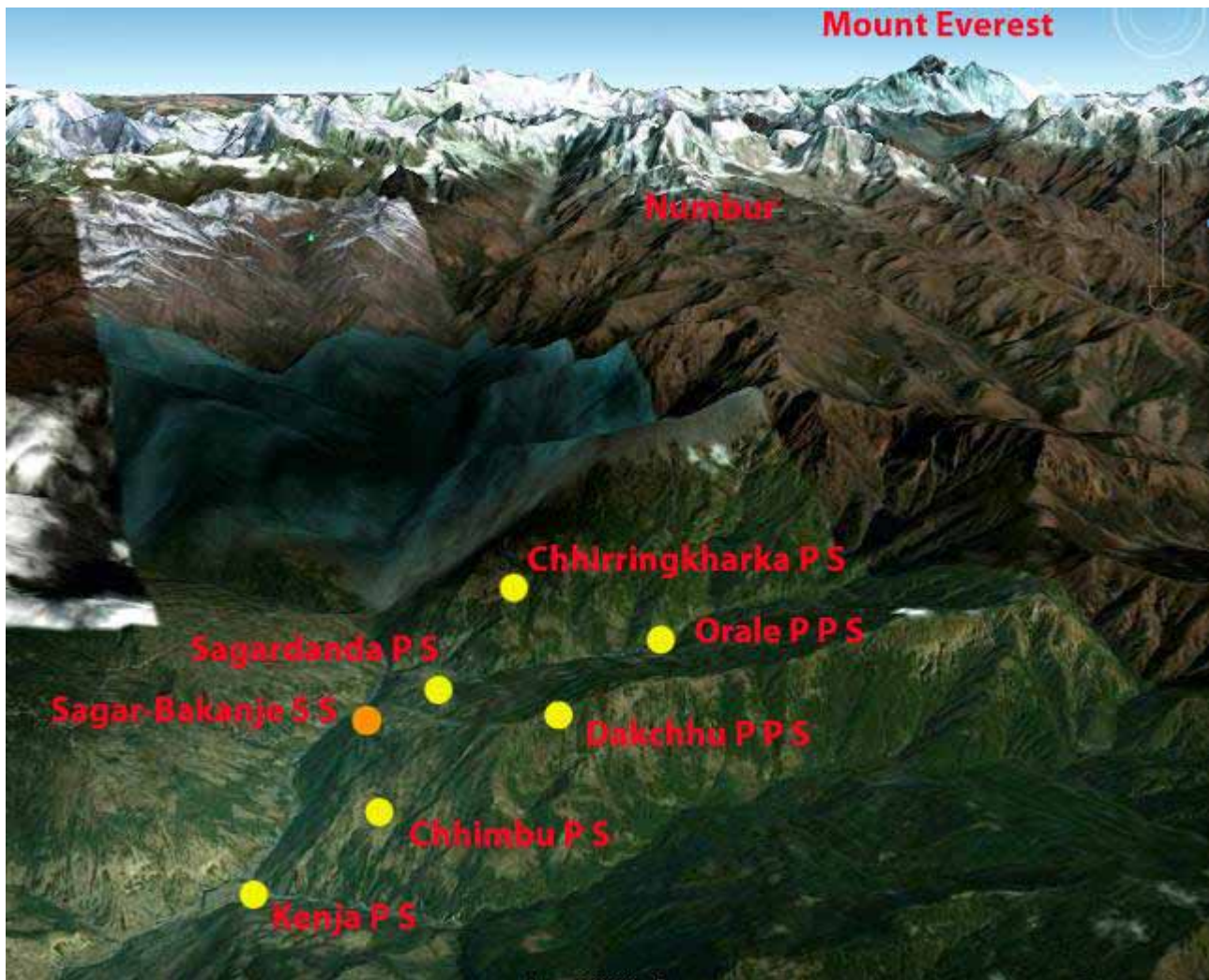
This project shall be run under the leadership of Nykøbing Mors Rotary Klub which has been given a donation from "Elsa & Jørgen Vestergaards Fond" for the purpose of giving education to children in developing countries. The project is described by the NGO Himalayan Project Danmark (HP) which has been working in the project area for 14 years. Many members of HP are Rotarians and 3 Members of Board are also members of Skivehus Rotary Klub, among those the Chairman Kurt Lomborg. For further information on HP the homepage [www.nepalhelp.dk](http://www.nepalhelp.dk) should be visited. The project will be monitored by Himalayan Project Nepal (HIPRON) which has been working together with HP for 11 years to implement the projects of the area. Rotary Club of Kathmandu has cooperated with us for many years with many projects, among which one has been a MG-project, and they have given their commitment to join this project as well.





Sagar-Bakanje Secondary School is named Shree Chandra Jyoti School after a famous Nepali poet, and it is really situated in a real poetic place high above the valley and with magnificent view up the Numbur Mountains. The school was built in 1967 by Sir Edmund Hillary (First ascender of Mount Everest) as a primary school running up to class 5. He built the Office, which is still there, and a long building with 5 small class rooms, and a toilet. In late nineties two earthquake resistant buildings (ERB) were raised with support from UNDP, but they were never fully completed. After that the school was approved for running Lower Secondary level up to class 7. In 2003 Himalayan Project started to show interest in the school, as the children from the Skivehus Rotary Klub supported Chhimbu Primary School were completing their class 5 and were going to transfer to the secondary school in Sagar-Bakanje. In 2005 we started completing the two ERB by laying stone slate floor and new high quality furniture with support from Venø Menighedsforening. Also in 2005 HP employed Nuru Jangbu Sherpa as an English Medium Secondary Teacher, and we have paid his salary since then. In 2007 the old toilet was overfilled after 40 years of use, so with support from HP, Nykøbing Mors Rotary Klub and Rotary Danmarks Hjælpefond a new sanitary complex were constructed with two toilets, urinal and solar heated hot shower. Also in 2007 the old 5-classroom building were removed and a fine new building with 4 classrooms were set up by Rural Reconstruction Nepal and later same year the interior of the classrooms were completed as well as the two ERB with support by Padborg-Kruså Rotary Klub. In 2008 a beautiful two store Science Laboratory Building was built again with support from Padborg-Kruså Rotary Klub, and in same project a strong compound wall around the whole school land was set up. In 2009 District Education Office (DEO) gave permission to the school to run as a Secondary School up to class 10. This happened because of the physical structures upgraded by us, but also because HP is now a ruling power in Solu and our lobbying has become quite effective. In 2010 HP started supplying the science lab with furniture, books and equipment. A process which will be ongoing when the utilization is monitored. In the science lab still the computer room remains empty. We have demanded that Sagar-Bakanje Hydropower shall operate as a self-sustainable and stable unit, which still hasn't happened.



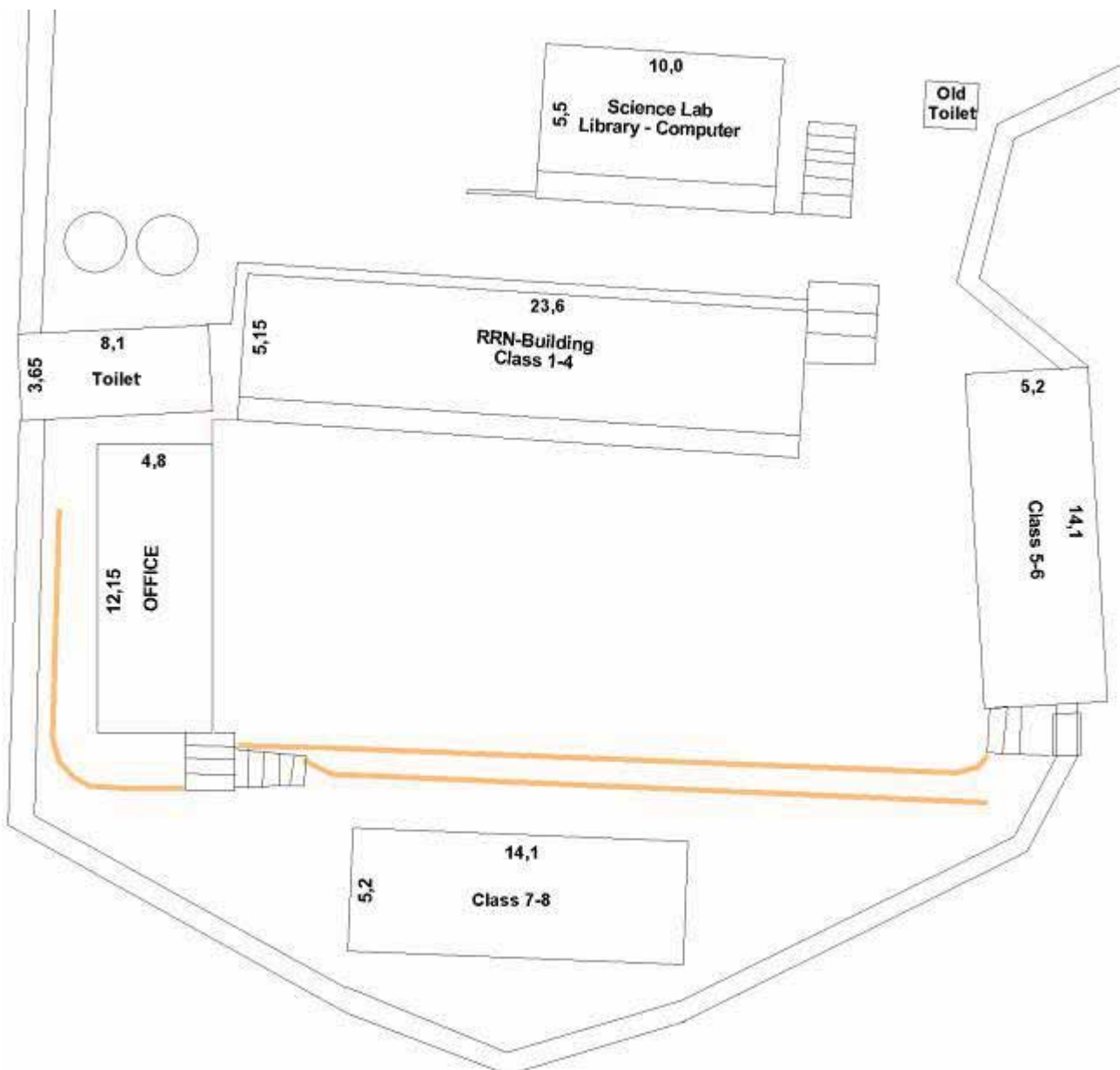


Now the only major construction remaining to complete the school for the time being is building a classroom for Class 9 and Class 10 and to renew the old and outdated Office Building which is close to collapse. When this is completed the whole school will appear as one of the most efficient, elaborated, adapted and beautiful schools in the whole mountainous region of Nepal. By then the only real great obstacle in creating a perfect school will be improving the teacher's educational knowledge to be up to the educational needs of the students. HP has this year with support from Danish Embassy of Nepal, initiated a School Empowerment Project which will run for 3 years until 2015, which should be improving this imperfection. The school is in its own name the owner of a big land which is now inside the compound wall and it has been a long lasting plan once to change this land into a beautiful park with trails, arboreta, school gardens and nurseries, resting places and other attractive facilities. But that plan will wait until everything else is working in a perfect way.

DEO have after approving the school to run up to class 10, supported the school with 600.000 NRS (7.600 US\$ / 43.000 DKR), of which 50% is already transferred, for the purpose of building two classrooms for class 9 & 10. But the school has no place to build it, as all flat land is occupied. Therefore HP has negotiated with DEO to include this support to our project to reconstruct the almost collapsing office making both structures on the same spot. DEO demanded having their own engineer to make the design, but we succeeded convincing DEO, that our design is far superior, not the least because we will implement the newest theories on making the structure earthquake resistant. But according to Nepalese rules the construction has to be ongoing before end of this fiscal year (15. July 2012) otherwise the second 50% transfer will not come into effect. But according to TRF-MG rules no part of the project can be initiated before TRF has approved. But

again we have succeeded convincing DEO, that if we can give a signed “Letter of Commitment” from Nykøbing Mors Rotary Klub before 15. July their second installment will be considered.

Sagar-Bakanje Secondary School is the senior school for the whole Bakanje VDC (Village Development Committee = municipality) so Bakanje students who wishes to study class 6 up to 10 will enroll here. As the school doesn’t have the best educational reputation up to now, some families prefer sending their children further off for boarding school or other secondary schools with longer walking distance. Especially from Kenja Primary School that is the case, as Chaulakharka Secondary School in Goli VDC is approximately same distance. From Sagardanda Primary School some students prefer Gumdel Secondary School on the opposite side of the valley, but distance is longer. From Chhimbu Primary School most students prefer Sagar-Bakanje Secondary School, but a few living nearer Kenja prefer Chaulakharka. But if we can upgrade the school facilities and also can upgrade the educational standard of the teachers there will be no doubt that more students will seek their education here and fewer students will drop out untimely. Last year the elder students called in for mass meetings and strikes to demand higher educational standard and VDC have granted a yearly extra support to the school, which is utilized for increasing the salaries of the most dedicated and skilled teachers.





The project, which this proposal is dealing with, is to give the school classrooms for Class 9 and Class 10. These rooms shall be situated in the ground floor with direct access to the school yard. The floors shall be with stone slates.

First floor shall be arranged with Teachers Room, Headmasters Office Room and Store Room. The access shall be by an outside veranda on the school yard side, so the teachers can overview the activities in the school.

Only less materials in the 45 years old Office Building can be reused, so it will be taken down to the ground level even taking up the old fundament. The compound wall on the back side of the office shall be moved 4-5 feet so the new house will be 1,6 meter wider and 1,10 meter longer than the old building, and adding 1,2 meter for the veranda. The whole building shall be laid with very well cut stones like the science lab, and it shall be furnished with wooden ceiling on all interior walls for comfort of the users. The floor between the two stories shall be double for noise reduction, and the same with the wall between headmaster's office and the teacher's room. All rooms shall be complete with high quality and sufficient furniture.

We have succeeded in employing the most skilled craftsman in the whole area, Kami Chhiring Sherpa from Mopung, to be the contractor of the project. He has the highest reputation for his indisputable quality of work. Of the same reason he is very busy with many constructions so he will employ a highly skilled constructor and the most experienced carpenter of the area to work under his guidance. In April 2012 we had a meeting with Kami Chhiring, Headmaster Ang Dawa Sherpa, HIPRON Manager Namgyal Jangbu Sherpa and Kurt Lomborg, where construction details were discussed and budget was produced. And he will be ready to initiate the project as soon as we give starting signal. He was though somehow concerned about the Nepali inflation rate, which is around 12% p.a., as we produced a tight budget based on today's rates. We agreed in adding an inflation rate on 1% per month for each month the payments are delayed after 1. January 2012. On the other hand Kami Chhiring agreed in on his own account to start cutting stones, cutting wood and purchase cement, iron and other materials as soon as he will have the "Letter of Commitment" from Nykøbing Mors Rotary Klub, so the project will not be delayed from his side. And if we from our side are applying RDH and DDF-1440 on beforehand to have their approval in advance, then we will be able to apply TRF-MG right after 1. July to have their approval by



September 2012 with expected transfer by November 2012. We also have to make sure that Rotary Club of Kathmandu has no pending reporting towards TRF by the time of applying.

The budget as it is presented in this Project Description shall be updated before applying TRF-MG to adjust for currency rate fluxions, and advance approvals from RDH and DDF. There might also be minor changes in the account when Kami Chhiring Sherpa is reviewing the budget before signing the Contract.



#### **Ideal timeline of the project:**

**End of April 2012:** This Project Description is handed over to the club for their approval.

**Beginning of May 2012:** “Letter of Commitment” for DEO and “Contract of Contractor” for Kami Chhiring Sherpa to be sent for HIPRON.

**Mid May 2012:** HIPRON Manager Namgyal Jangbu Sherpa is handing over Project Description and above papers for relevant cooperators in Solukhumbu, and Kami Chhiring starts procuring materials.

**May 2012:** Nykøbing Mors Rotary Klub is giving in application for RDH and DDF for approval in advance on their support.

**1. July 2012:** Application is sent for TRF-MG, RDH and DDF for approval.

**Mid July 2012:** The second support from DEO is confirmed.

**August 2012:** Namgyal Jangbu Sherpa will visit the project site.

**September 2012:** Approval from TRF-MG can be expected and transfer of support from the club and DDF can be completed. Starting signal of the project can be given to Kami Chhiring.

**October 2012:** Kurt Lomborg and Namgyal Jangbu Sherpa will visit the project site several times during October and November.

**November 2012:** TRF-MG will transfer TRF-support for Rotary Club of Kathmandu which will transfer for Kami Chhiring, who then can start the very construction.

**January 2013:** Namgyal Jangbu Sherpa will visit the project site.

**March-April 2013:** Kurt Lomborg and Namgyal Jangbu Sherpa will visit the project site.

**April 2013:** First transfer from NM-RK through RC-KTM for Kami Chhiring.

**June 2013:** Second transfer from NM-RK through RC-KTM for Kami Chhiring.

**July 2013:** Namgyal Jangbu Sherpa will visit the project site.

**Autumn 2013:** Third and final transfer from NM-RK through RC-KTM for Kami Chhiring.

**October 2013:** Kurt Lomborg, and those members of NM-RK who wish to join, will inaugurate the completed building with a big party in Sagar-Bakanje Secondary School.

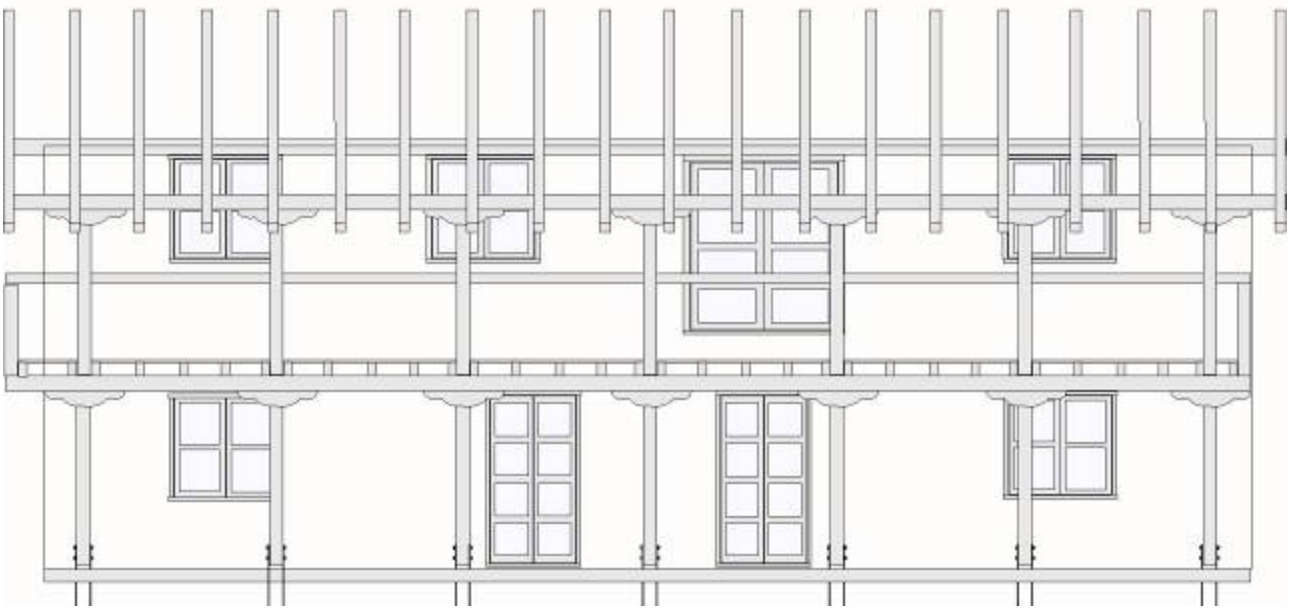
Chairman of HP, Rotarian Kurt Lomborg, commit himself to support and supervise Nykøbing Mors Rotary Klub in all steps of this project.

Kjeldbjerg on 2. May 2012

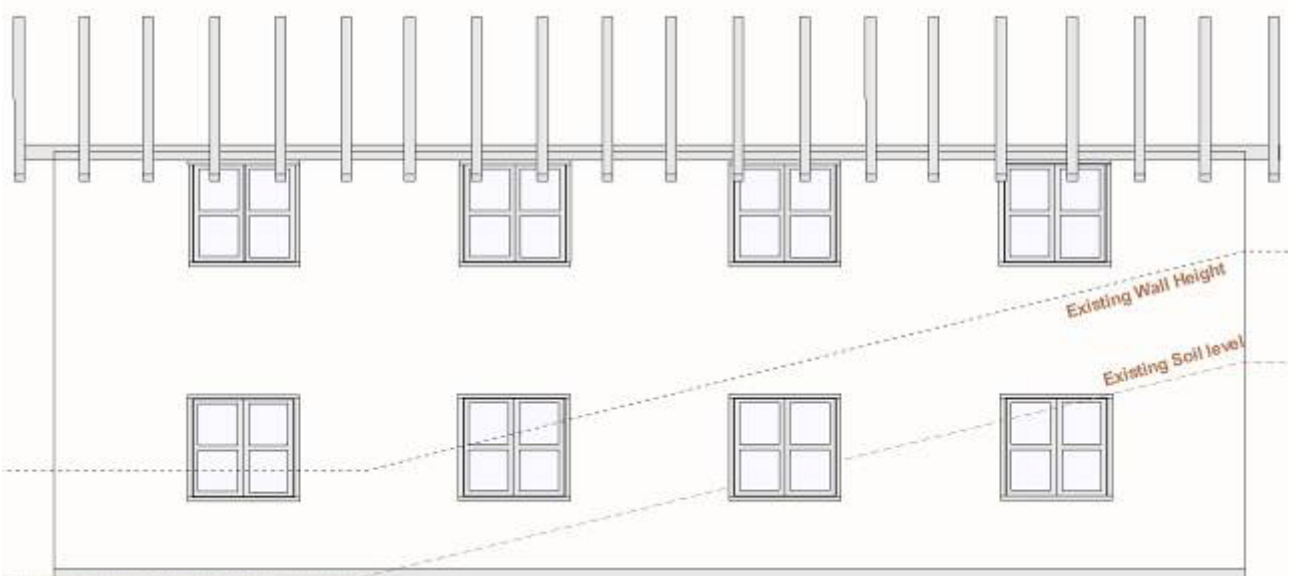


Kurt Lomborg  
Chairman of Himalayan Project Danmark  
Rotarian in Skivehus Rotary Klub

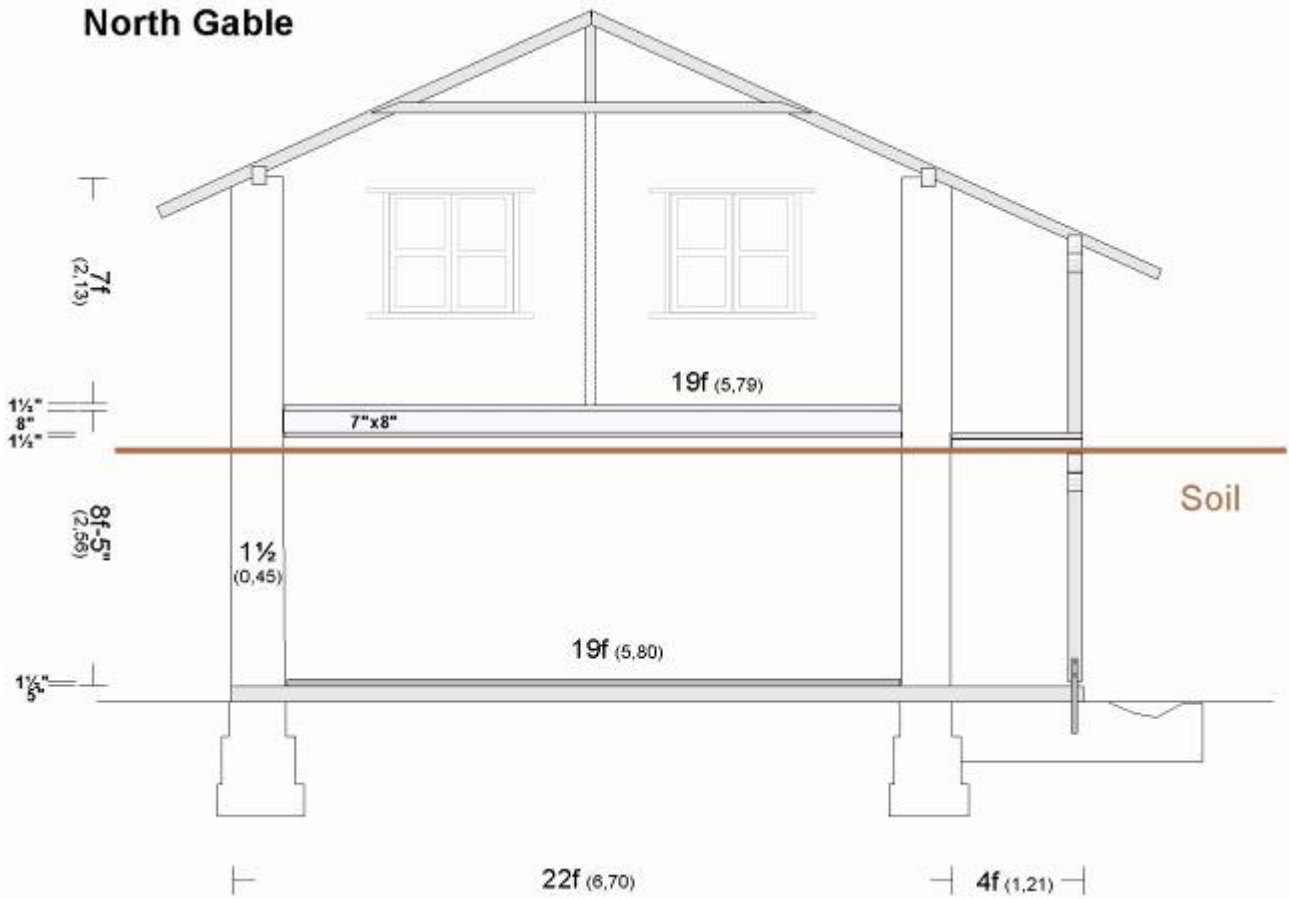
**Front Side**



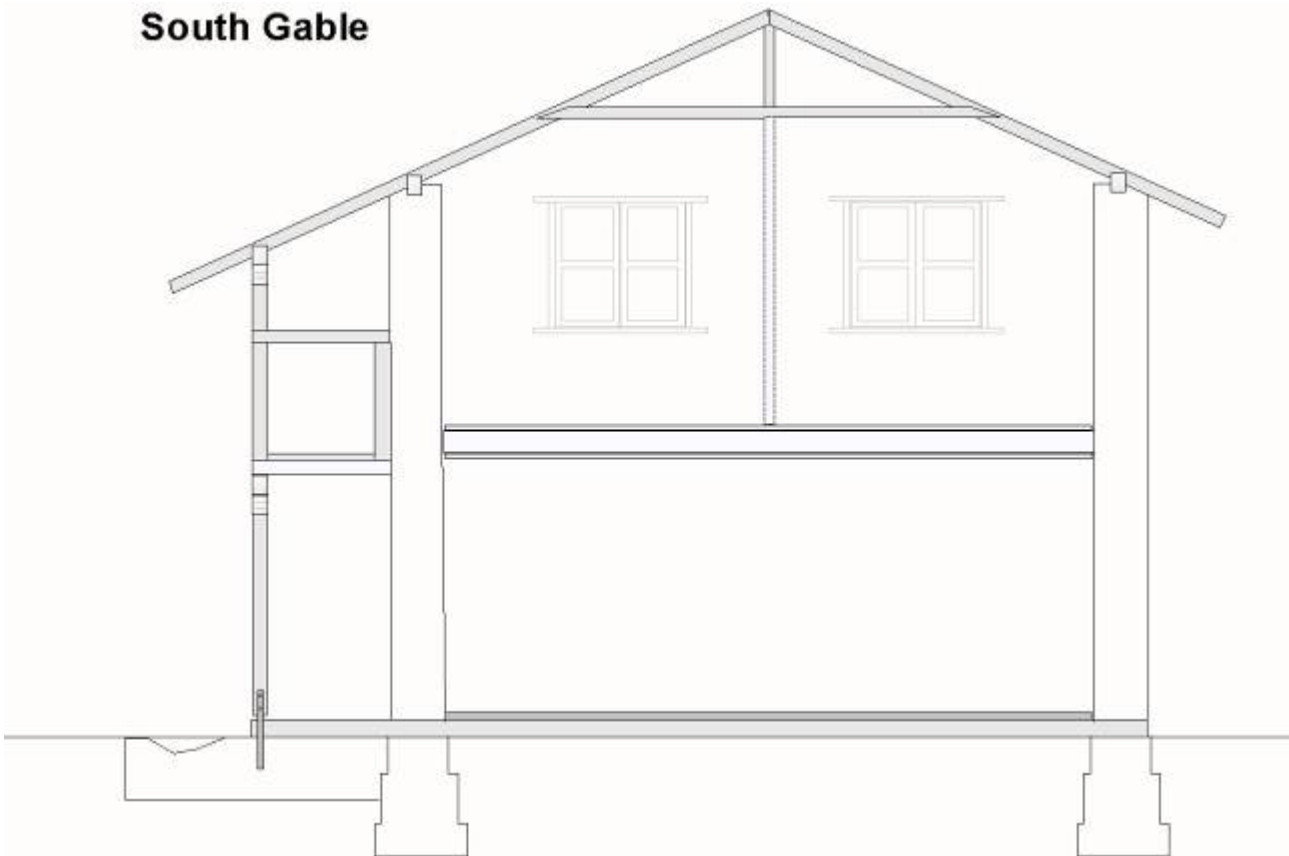
**Back Side**



### North Gable



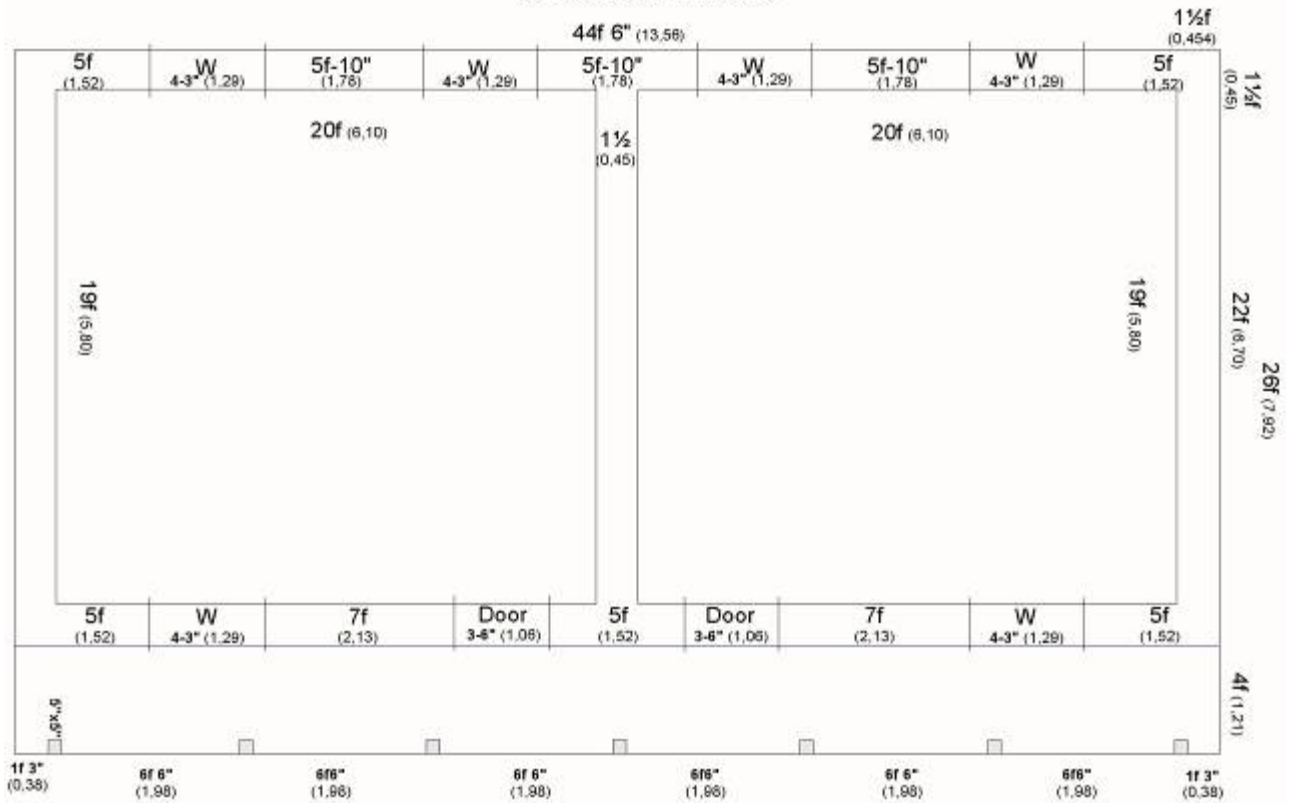
### South Gable





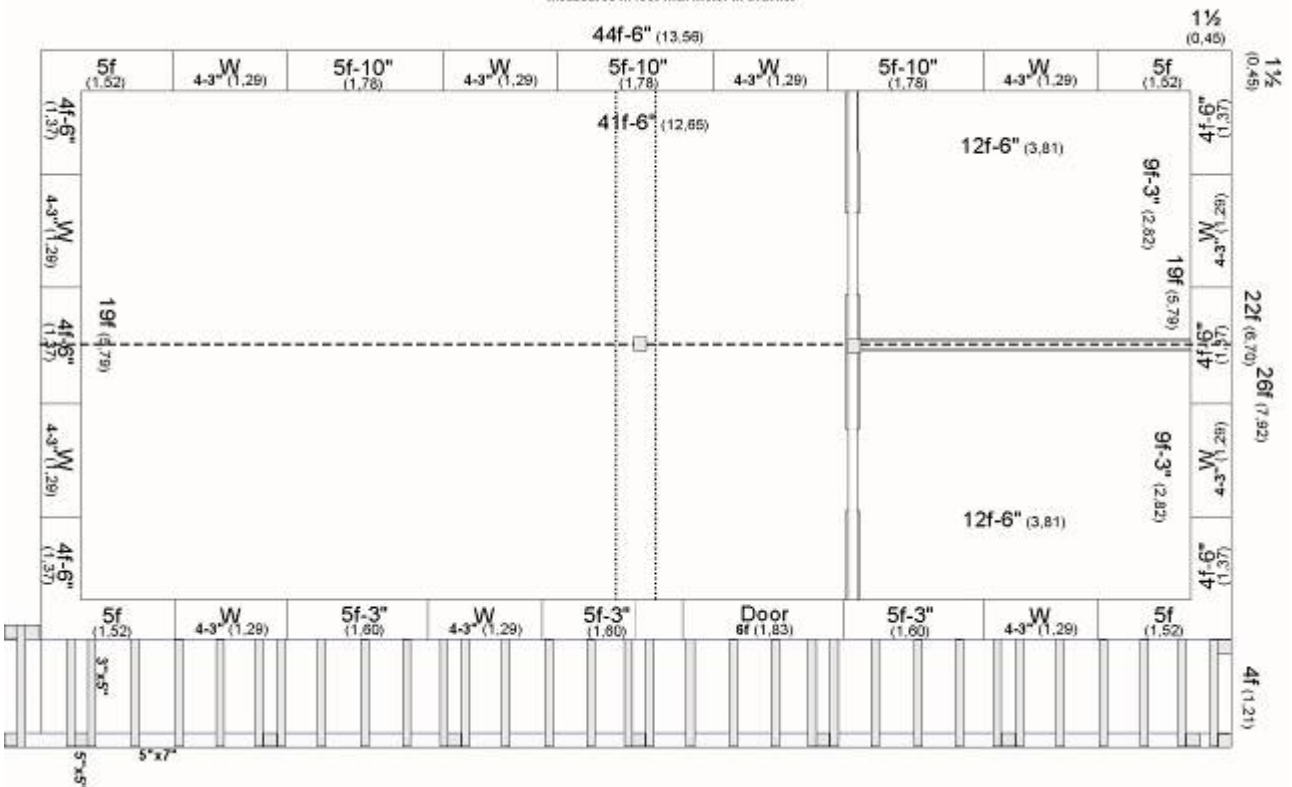
Sagar-Bakanje School: Class 9 & 10 and School Office - Ground Floor (Classrooms)

measures in feet with meter in bracket

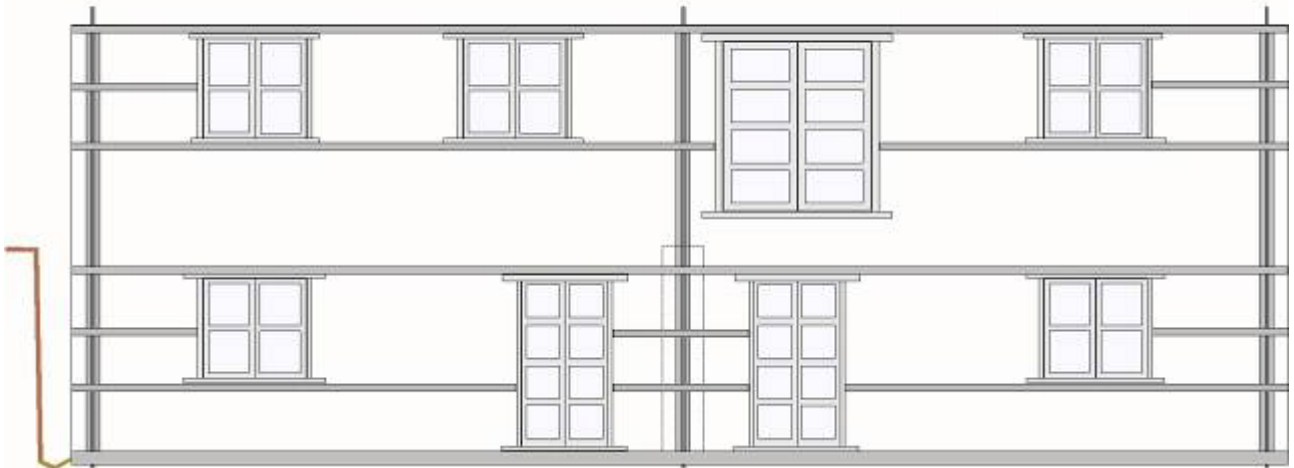


Sagar-Bakanje School: Class 9 & 10 and School Office - FIRST Floor (Office & Store)

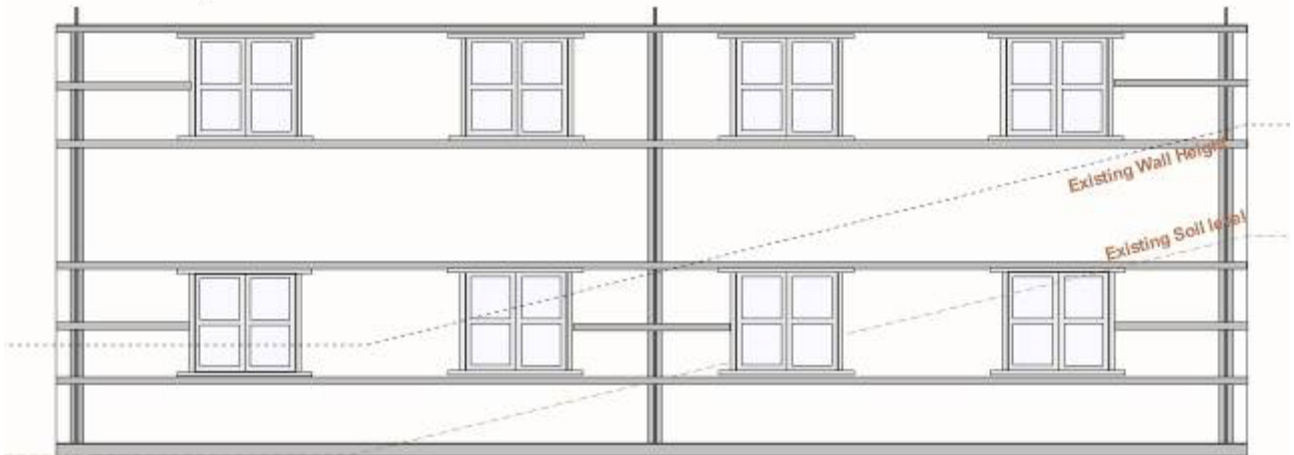
measures in feet with meter in bracket



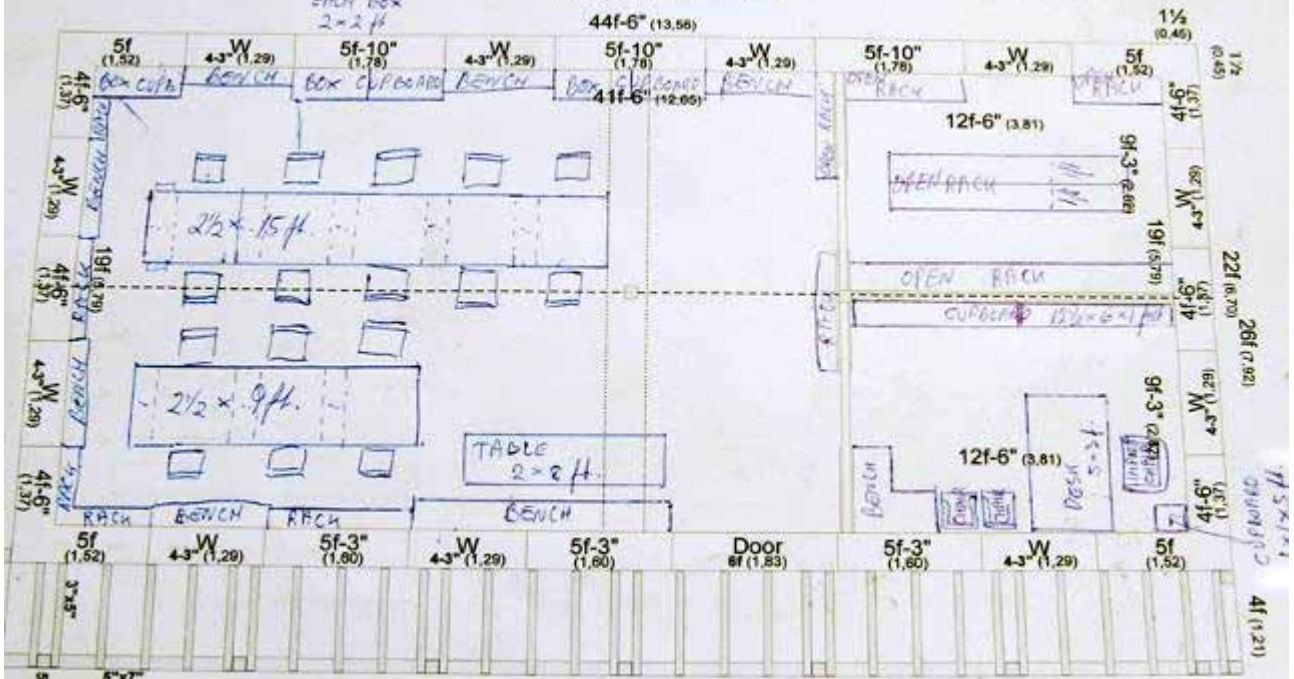
**Front Side**  
with Earthquake Resistance RCC

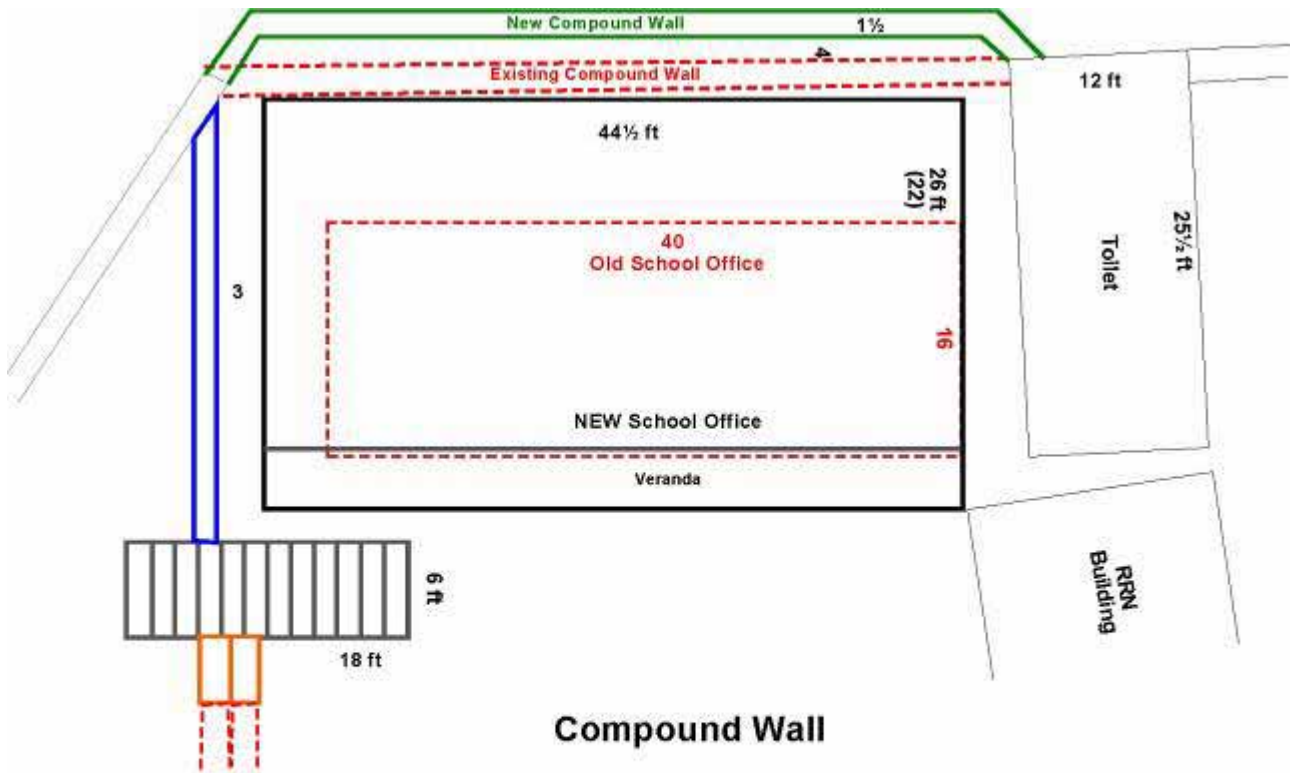


**Back Side**  
with Earthquake resistance RCC



**Sagar-Bakanje School: Class 9 & 10 and School Office - FIRST Floor (Office & Store)**  
measures in feet with meter in bracket





**Compound Wall**





## EXPENSE BUDGET FOR CHANDRA JYOTI SECONDARY SCHOOL

### Construction of School Office and two Classrooms

	Size	Quantity	NRS/Unit	NRS/Unit	No.	TOTAL NRS
<b>① THE Earthquake resistant OFFICE &amp; CLASSROOM BUILDING</b>						
<b>1. Windows and Doors</b>						
<b>A. Windows:</b>						
Botam 4"x5"	3,5 haat	5 piece	50 /haat IT	=	875 /window	18 15.750
Mal dum 4"x9"	4,0 haat	8 piece	70 /haat IT	=	2.240 /window	18 40.320
Naskar 2"x4"	7,0 haat	3 piece	40 /haat IT	=	840 /window	18 15.120
	WOOD:				3.955 /window	71.190
	LABOR:	6 MD	750 /MD IP	=	4.500 /window	18 81.000
	TOTAL:				8.455 /window	<b>152.190</b>
<b>Glass, Enamel and Grill</b>						
Window Glass		72 piece	350 /piece IT			25.200
Enamel		25 litre	535 /litre IT			13.375
Grill		10 kg	385 /kg IT		18	69.300
	MATERIALS:					107.875
	LABOR:	35 MD	650 /MD IP			22.750
	TOTAL:					<b>130.625</b>
TOTAL for Windows:						<b>282.815</b>
<b>B. Doors:</b>						
Botam 4"x5"	5,0 haat	4 piece	50 /haat IT	=	1.000 /door	3 3.000
Mal dum 4"x9"	5,0 haat	5 piece	70 /haat IT	=	1.750 /door	3 5.250
Naskar 2"x4"	7,0 haat	4 piece	40 /haat IT	=	1.120 /door	3 3.360
	WOOD:				3.870 /door	11.610
	LABOR:	5 MD	750 /MD IP	=	3.750 /door	3 11.250
TOTAL for Doors:						<b>22.860</b>
<b>C. Extras for Windows and Doors:</b>						
Hinches						15.000
Khaski						3.000
Varnish						20.000
Transportation						6.000
						<b>44.000</b>
<b>TOTAL Windows and Doors:</b>						<b>349.675</b>
<b>2. Veranda</b>						
Plank for Ceiling 1"x18"	7,0 haat	100 piece	45 /haat IT			31.500
Plank for Goti 1,5"x9"	7,0 haat	100 piece	45 /haat IT			31.500
Botam 4"x5"	5,0 haat	20 piece	50 /haat IT			5.000
Pole 6"x6"	5,5 haat	16 piece	120 /haat IT			10.560
Bim 4"x6"	13,0 haat	16 piece	120 /haat IT			24.960
Beam 6"x6"	13,0 haat	2 piece	140 /haat IT			3.640
Beam 6"x6"	8,0 haat	10 piece	140 /haat IT			11.200
	WOOD:					118.360
	LABOR:	35 MD	650 /MD IP			22.750
<b>TOTAL for Veranda:</b>						<b>141.110</b>
<b>3. Floors:</b>						
<b>A. Ground Floor:</b>						
Stone Slates		253 f <sup>2</sup>	60 /f <sup>2</sup> IT	=	15.180 /room	2 30.360
	LABOR:	253 f <sup>2</sup>	50 /f <sup>2</sup>	=	12.650 /room	2 25.300
Total Ground Floor:						<b>55.660</b>

## EXPENSE BUDGET FOR CHANDRA JYOTI SECONDARY SCHOOL

### Construction of School Office and two Classrooms

	Size	Quantity	NRS/Unit	NRS/Unit	No.	TOTAL NRS
<b>B. First Floor:</b>						
Planks 1,5"x9"	7,0 haat	50 piece	50 / haat IT	= 17.500 /room	2	35.000
Mud mixed with straw for noise reduction						
LABOR:		12 MD	650 /MD IP	= 7.800 /room	2	15.600
Total First Floor:						<b>50.600</b>
<b>TOTAL Floors:</b>						<b>106.260</b>
<b>4. Roof</b>						
<b>A. Tin Plates:</b>						
Tin Plate 26 Gz	8,0 f	40 piece	1.150 /plate			46.000
Tin Plate 26 Gz	6,0 f	61 piece	850 /plate			51.850
Plain Sheet 26 Gz	8,0 f	3 piece	1.150 /plate			3.450
Sky Light	8,0 f	8 piece	2.500 /plate			20.000
Gutter 26 Gz	8,0 f	13 piece	1.200 /plate			15.600
Hook for gutter		80 piece	250 /plate			20.000
Transportation		785 kg	35 /kg			27.475
TOTAL Tin plates:						<b>184.375</b>
<b>B. Wood for Roof:</b>						
Bata 4"x5"	9,0 haat	25 piece	55 /haat IT			12.375
Bata 4"x5"	11,0 haat	25 piece	60 /haat IT			16.500
Naskar 2"x4"	7,0 haat	65 piece	40 /haat IT			18.200
Pole 6"x6"	5,5 haat	16 piece	120 /haat IT			10.560
TOTAL Wood:						<b>57.635</b>
<b>C. Nails:</b>						
Normal nails	4,0 inch	20 kg	160 /kg			3.200
Normal nails	3,0 inch	5 kg	160 /kg			800
Normal nails	2,0 inch	5 kg	160 /kg			800
Roof nails		10 kg	200 /kg			2.000
Waskar		2,5 kg	800 /kg			2.000
Transportation:		43 kg	35 /kg			1.488
Total Nails:						<b>10.288</b>
<b>D. Labor:</b>						
		25 MD	650 /kg			<b>16.250</b>
<b>TOTAL Roof:</b>						<b>268.548</b>
<b>5. Construction of Building:</b>						
<b>A. Stone:</b>						
Cutting of stone	35 pile		2.500 /pile			87.500
Transporting stone	35 pile		3.500 /pile			122.500
						<b>210.000</b>
<b>B. Cement, Sand and Gravel:</b>						
Cement in Kathmandu	150 sacks		850 /sack			127.500
Transportation	150 sacks		1.250 /sack			187.500
Sand	600 tin		100 /tin IT			60.000
Gravel	600 tin		100 /tin IT			60.000
						<b>435.000</b>
<b>C. Iron:</b>						
Iron rod 12 mm	750 kg		95 /kg			71.250
Iron rod 20mm	150 kg		95 /kg			14.250
Iron rod 7 mm	250 kg		95 /kg			23.750
Iron wire	10 kg		95 /kg			950

**EXPENSE BUDGET FOR CHANDRA JYOTI SECONDARY SCHOOL**

**Construction of School Office and two Classrooms**

	Size	Quantity	NRS/Unit	NRS/Unit	No.	TOTAL NRS
Iron angel plate	60 kg		350 /kg			21.000
Transportation	1.220 kg		35 /kg			42.700
						<b>173.900</b>
<b>D. Electric Installation</b>	Wire hidden inside ceiling - many take out for lamps and sockets					
	Prepare for future computer utilization					<b>100.000</b>
<b>E. Labor:</b>						
Building fundament	25 MD		750 /SMD IP			18.750
Building fundament	25 MD		600 /USMD IP			15.000
Building House	350 kg		750 /SMD IP			262.500
Building House	200 kg		600 /USMD IP			120.000
						<b>416.250</b>
<b>TOTAL Labor for building House:</b>						<b>1.335.150</b>
<b>TOTAL for building the OFFICE and CLASSROOM BUILDING:</b>						<b>2.200.743</b>
Unforeseen	2,5 % of budget					55.019
Contractor Salary	7,5 % of budget					165.056
<b>GRAND TOTAL for ①: building the OFFICE and CLASSROOM BUILDING:</b>						<b>2.420.817</b>
Currency rate:	14,87 NRS/DKR per May 2012					<b>kr. 162.749</b>
Currency rate:	83,00 NRS/US\$ per May 2012					<b>\$29.166</b>

**② COMPOUND WALL, Ceiling and Furniture (TRF-MG applicable):**

**1. Compound Wall:**

**A. Stones for Compound Wall and Stairs:**

Cutting Stone	18 pile		2.500 /pile			45.000
Transporting Stone	18 pile		3.500 /pile			63.000
Stone slate	150 f <sup>2</sup>		60 /f <sup>2</sup>			9.000
						<b>117.000</b>

**B. Labor on Compound Wall:**

Taking down existing structures	60 MD		600 /USMD IP			36.000
Cutting mud with 100 m lead	150 MD		600 /USMD IP			90.000
Building Compound Wall	150 MD		750 /SMD IP			112.500
Building Stairs	20 MD		750 /SMD IP			15.000
						<b>253.500</b>

**TOTAL for Compound Wall: 370.500**

**2. Wooden Ceiling in all rooms:**

**A. Materials:**

Planks for wall 1"x8"	6,0 haat	150 piece	45 /haat IT =	40.500 /room	4	162.000
Planks 1.floor roof 1"x8"	7,0 haat	150 piece	45 /haat IT =	47.250 /room	2	94.500
Planks class roof 1,5"x9"	7,0 haat	50 piece	50 /haat IT =	17.500 /room	2	35.000
Normal nails	4,0 inch	20 kg	160 /kg			3.200
Normal nails	3,0 inch	25 kg	160 /kg			4.000
Normal nails	2,0 inch	25 kg	160 /kg			4.000
Transportation:		50 kg	35 /kg			1.750
						<b>304.450</b>

Materials: **304.450**

**B. Labor:**

Labor for wall ceiling:	35 MD		650 /MD IP			22.750
Labor for roof ceiling:	45 MD		650 /MD IP			29.250
						<b>52.000</b>

**TOTAL for Ceiling: 356.450**



## EXPENSE BUDGET FOR CHANDRA JYOTI SECONDARY SCHOOL

### Construction of School Office and two Classrooms

	Size	Quantity	NRS/Unit	NRS/Unit	No.	TOTAL NRS
<b>3. Furniture:</b>						
<b>A. Desks, Table, and Bench in Office Room:</b>						
Botam 3"x4"	6,0 haat	8 piece	45 /haat IT =	2.160 /desk	12	25.920
Plank 1,5"x9"	6,0 haat	4 piece	45 /haat IT =	1.080 /desk	12	12.960
Plank 1"x8"	6,0 haat	4 piece	45 /haat IT =	1.080 /desk	12	12.960
Plank for Bench 1,5"x10"	4,0 haat	4 piece	45 /haat IT =	720 /desk	25	18.000
WOOD:						69.840
LABOR:		4 MD	750 /MD IP =	3.000 /desk	12	36.000
						<b>7.320 /desk</b>
						<b>105.840</b>
<b>B. Chairs:</b>						
Plank 3"x3"	5,0 haat	5 piece	70 /haat IT =	1.750 /chair	18	31.500
Plank 1,5"x8"	3,0 haat	1 piece	70 /haat IT =	210 /chair	18	3.780
WOOD:						35.280
LABOR:		3 MD	750 /MD IP =	2.250 /chair	18	40.500
						<b>4.210 /chair</b>
						<b>75.780</b>
<b>C. Cupboard for Headmaster:</b>						
Plank 1,5"x9"	5,0 haat	30 piece	45 /haat IT			6.750
Plank 1"x8"	5,0 haat	10 piece	45 /haat IT			2.250
Naskar 2"x4"	5,0 haat	16 piece	45 /haat IT			3.600
WOOD:						12.600
LABOR:		12 MD	750 /MD IP			9.000
						<b>21.600</b>
<b>D. Box Cupboard for Teachers:</b>						
Plank 1,5"x9"	4,0 haat	5 piece	45 /haat IT =	900 /box	5	4.500
Plank 1,5"x9"	6,0 haat	4 piece	45 /haat IT =	1.080 /box	5	5.400
Plank 1"x8"	3,0 haat	12 piece	45 /haat IT =	1.620 /box	5	8.100
Naskar 2"x4"	4,0 haat	12 piece	45 /haat IT =	2.160 /box	5	10.800
WOOD:						28.800
LABOR:		7 MD	750 /MD IP =	5.250 /box	5	26.250
						<b>11.010 /box</b>
						<b>55.050</b>
<b>E. Bench in Office Room:</b>						
Plank 1,5"x9"	6,0 haat	18 piece	45 /haat IT			4.860
LABOR:		15 MD	750 /MD IP			11.250
						<b>16.110</b>
<b>F. Racks in Store Room:</b>						
Plank 1,5"x9"	5,0 haat	90 piece	45 /haat IT			20.250
Plank 1,5"x9"	8,0 haat	10 piece	45 /haat IT			3.600
WOOD:						23.850
LABOR:		35 MD	750 /MD IP			26.250
						<b>50.100</b>
<b>G. Student Desk:</b>						
Plank 1,5"x9"	4,0 haat	5 piece	45 /haat IT =	900 /desk	30	27.000
LABOR:		2 MD	750 /MD IP =	1.500 /desk	30	45.000
						<b>72.000</b>
<b>H. Student Bench:</b>						
Plank 1,5"x9"	4,0 haat	2 piece	45 /haat IT =	360 /bench	30	10.800
Botam 4"x5"	4,0 haat	2 piece	45 /haat IT =	360 /bench	30	10.800
WOOD:						21.600
LABOR:		1,5 MD	750 /MD IP =	1.125 /desk	30	33.750
						<b>55.350</b>
<b>I. Varnish:</b>						
Varnish		24 litre	550 /litre IT			13.200
Hinges and Nails IT						15.000
						Materials: 28.200
LABOR:		10 MD	750 /MD IP			7.500
						<b>35.700</b>
						<b>487.530</b>
<b>TOTAL for locally produced Furniture:</b>						
<b>J. Imported chairs:</b>						
Headmaster Chair						20.000
2 guest chairs with armrest						20.000
Transportation						2.500
						<b>42.500</b>
						<b>TOTAL for imported chairs:</b>

**EXPENSE BUDGET FOR CHANDRA JYOTI SECONDARY SCHOOL**

**Construction of School Office and two Classrooms**

	Size	Quantity	NRS/Unit	NRS/Unit	No.	TOTAL NRS
<b>TOTAL for Compound Wall, Ceiling and Furniture</b>						<b>1.256.980</b>
Unforeseen	2,5 % of budget					31.425
Contractor Salary	7,5 % of budget					94.274
<b>GRAND TOTAL for ②: building Compound Wall, Ceiling and Furniture</b>						<b>1.382.678</b>
Currency rate:	14,87 NRS/DKR per	May 2012				<b>kr. 92.956</b>
Currency rate:	83,00 NRS/US\$ per	May 2012				<b>\$16.659</b>
<b>GRAND TOTAL for ① &amp; ② to be transferred for Contractor:</b>						<b>3.803.495</b>
Currency rate:	14,87 NRS/DKR per	May 2012				<b>kr. 255.705</b>
Currency rate:	83,00 NRS/US\$ per	May 2012				<b>\$45.825</b>
<b>③ Bank transaction charges in Nepal:</b>						
Depositing charge:	<b>1.000</b> NRS per transfer of 4 transfers					4.000
Currency charge:	<b>2,5</b> % of transferred amount					95.087
						<b>99.087</b>
Currency rate:	14,87 NRS/DKR per	May 2012				<b>kr. 6.662</b>
Currency rate:	83,00 NRS/US\$ per	May 2012				<b>\$1.194</b>
<b>④ Supervision and Monitoring by HIPRON</b>						<b>570.524</b>
(Project Administration to be paid with first Rotary payment)			<b>15 % of total construction budget</b>			<b>kr. 38.356</b>
						<b>\$6.874</b>
<b>GRAND PROJECT TOTAL</b>						<b>4.473.106</b>
Currency rate:	14,87 NRS/DKR per	May 2012				<b>kr. 300.722</b>
Currency rate:	83,00 NRS/US\$ per	May 2012				<b>\$53.893</b>
<b>⑤ Payments:</b>						
<b>1. DEO support:</b>	<b>600.000</b> NRS	for Compound Wall & cutting STONE & starting on WOOD				
		But no work can start before TRF-MG have given approval - probably by end of <b>autumn 2012</b>				
<b>2. Rotary Payment (MG):</b>	<b>1.300.000</b> NRS	for cutting wood & importing external materials				
		When TRF-MG has approved and the MG is transferred to Rotary Club of Kathmandu - probably by <b>end of 2012</b>				
<b>3. Rotary Payment:</b>	<b>500.000</b> NRS	when raw building is approved by HIPRON/HP				
		This will probably be possible by <b>April 2013</b>				
<b>4. Rotary Payment:</b>	<b>1.000.000</b> NRS	When complete building is approved by HIPRON/HP				
		This will probably be possible by <b>June 2013</b>				
<b>5. Rest Rotary Payment</b>	<b>1.073.106</b> NRS	When the whole project is approved by HIPRON/HP				
		This will probably be possible by <b>Autumn 2013</b>				
<b>⑥ Inflation Regulation:</b>						
		<b>This budget is valid until 31. December 2012.</b>				
		<b>After 1. January 2013 there shall be added 1 % as Inflation Regulation per month of delay of each payment</b>				
<b>3. Rotary Payment by mid April 2013</b>		3,5 months delay of	<b>2.573.106</b> NRS			90.059
<b>4. Rotary Payment by mid June 2013</b>		2,0 months extra delay of	<b>2.073.106</b> NRS			41.462
<b>5. Rest Rotary Payment by Autumn 2013</b>		4,0 months extra delay of	<b>1.073.106</b> NRS			42.924
		<b>TOTAL Budget on Inflation regulation:</b>				<b>174.445</b>
Currency rate:	14,87 NRS/DKR per	May 2012				<b>kr. 11.728</b>
<b>Summaries:</b>						
All Materials which have to be IMPORTED including transportation to construction site:						<b>743.438</b>
All WOOD including transportation from forest to construction site:						<b>780.325</b>
All STONE including transportation from cutting site to construction site:						<b>318.000</b>
All Stone Slates including transportation to construction site:						<b>39.360</b>
All OTHER local materials including transportation to construction site:						<b>120.000</b>
All LABOR costs including povisions (lunch + 3 times tea)						<b>1.152.150</b>
TOTAL economy which will benefit the people of Bakanje VDC:						<b>2.409.835</b>

## INCOME BUDGET FOR CHANDRA JYOTI SECONDARY SCHOOL

### Construction of School Office and two Classrooms

RI Exchange Rates	May 2012	<b>5,58</b> DKR/US\$	<b>14,87</b> NRS/DKR
		<b>83,0</b> NRS/US\$	

	DKR	US \$	
<b>Total Expense Budget:</b>	<b>300.722</b>	<b>53.893</b>	
Nepali support from DEO	40.337	7.229	NPR 600.000
Support Rotary Club of Kathmandu	558	100	
Application for RDH	40.000	7.168	
Application for DDF-1440	41.850	7.500	
Application for TRF-MG	46.478	8.329	
Support from Nykøbing Mors RK	<b>131.499</b>	<b>23.566</b>	
Budget on Inflation Regulation	11.728	2.102	
TOTAL from Nykøbing Mors RK	<b>143.227</b>	<b>25.668</b>	
② TRF-MG applicable amount	<b>92.956</b>	<b>16.659</b>	
Support Nykøbing Mors RK	4.070	729	
Support Rotary Club of Kathmandu	558	100	
Application for DDF-1440	41.850	7.500	
TRF-MG 100% of DDF	41.850	7.500	
TRF-MG 50% of club support	4.628	829	
	<b>92.956</b>	<b>16.659</b>	NPR 1.382.678

#### **It is a condition that RDH, DDF and TRF-MG will approve the applications**

RDH and DDF can only be applied at the beginning of the new Rotary Year after 1. July 2012, but both funds can be applied in advance to have their view on the project and they will probably be able to give an approval in advance, or at least they will be able to give proper recommendations.

Furthermore it is a condition that District Education Office, Solukhumbu District (DEO) will transfer all their support for the Office Construction. For now 300.000 NRS has been transferred to the school, but the remaining 300.000 NRS will only be transferred if we can prove, that the project from our side will run very soon. We will have to give a signed document from donor and HP before 15. July 2012 that the project has started and that we expect the construction to be started by the turn of the year 2012-13.

Currency rate between Nepal and rest of the World is quite unstable, so before applying RDH, DDF and TRF-MG we shall update the rates. Even we have to update again when TRF-MG is approving the application, which again can create changes.